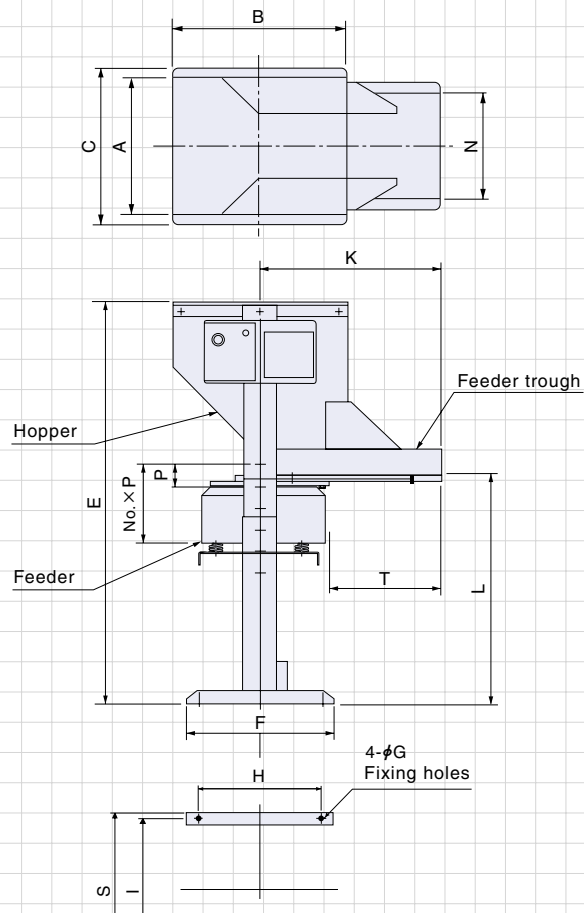


Feeder-type Hopper



15/30/60/100-liter Hopper Dimensions



Features

- By attaching a feeder to a hopper, parts delivery is extremely smoothly accomplished and running noise is kept extremely low.

Dimensions Chart, including Feeders

Unit: mm

Hopper capacity (ℓ)	model	Compatible Parts feeders	Permissible weight of work (kg)	A	B	C	E	F	G	H	I	K	L (*1)	N	Sliding base No. x P	S	T	Weight (kg)	Electromagnetic feeder	
																			Feeder model	Rated current (A)
15	HPF-15-3815B	EA-25	24	250	350	322	675~875	320	7	270	275	380	380~580	150	5 x 50	310	225	38	CF2	0.5
		ER-25																		
		EA-30																		
		ER-30																		
30	HPF-30-4215B	EA-25	24	300	400	372	775~975	350	7	290	325	420	380~580	150	5 x 50	360	265	42	CF2	0.5
		ER-25																		
		EA-30																		
		ER-30																		
		EA-38																		
		ER-38																		
EA-45																				
ER-45																				
60	HPF-60-6030B*	ER-55	56	450	600	553	865~1215	500	9	400	480	600	430~780	300	6 x 50	536	355	60	CF3	1.0
		ER-65																		
100	HPF-100-6030B*	ER-55	56	450	600	553	1015~1365	500	9	400	480	600	430~780	300	8 x 50	536	355	62	CF3	1.0
		ER-65																		

- Notes
- *1 Hoppers come in stainless steel only.
 - *2 Vibration frequency: 50~70 Hz; rated voltage: 200/220 V; compatible controller: C8-1VF. (No standard model with 100/110 v specifications.)
 - *3 Paint finish: Munsell N7.5
 - *4 For 15- and 30-liter hoppers, hopper heights come in 5 levels at 50 mm intervals; for 60- and 100-liter hoppers, hopper heights come in 8 levels at 50 mm intervals.
 - *5 Heavy-duty 60- and 100-liter hoppers (permissible total work weight 112 kg) are available as non-standard models.
 - * Manufactured to order.